

Experts' Conference

“Moving Forward Equity in Health”

Madrid, 21 April 2010

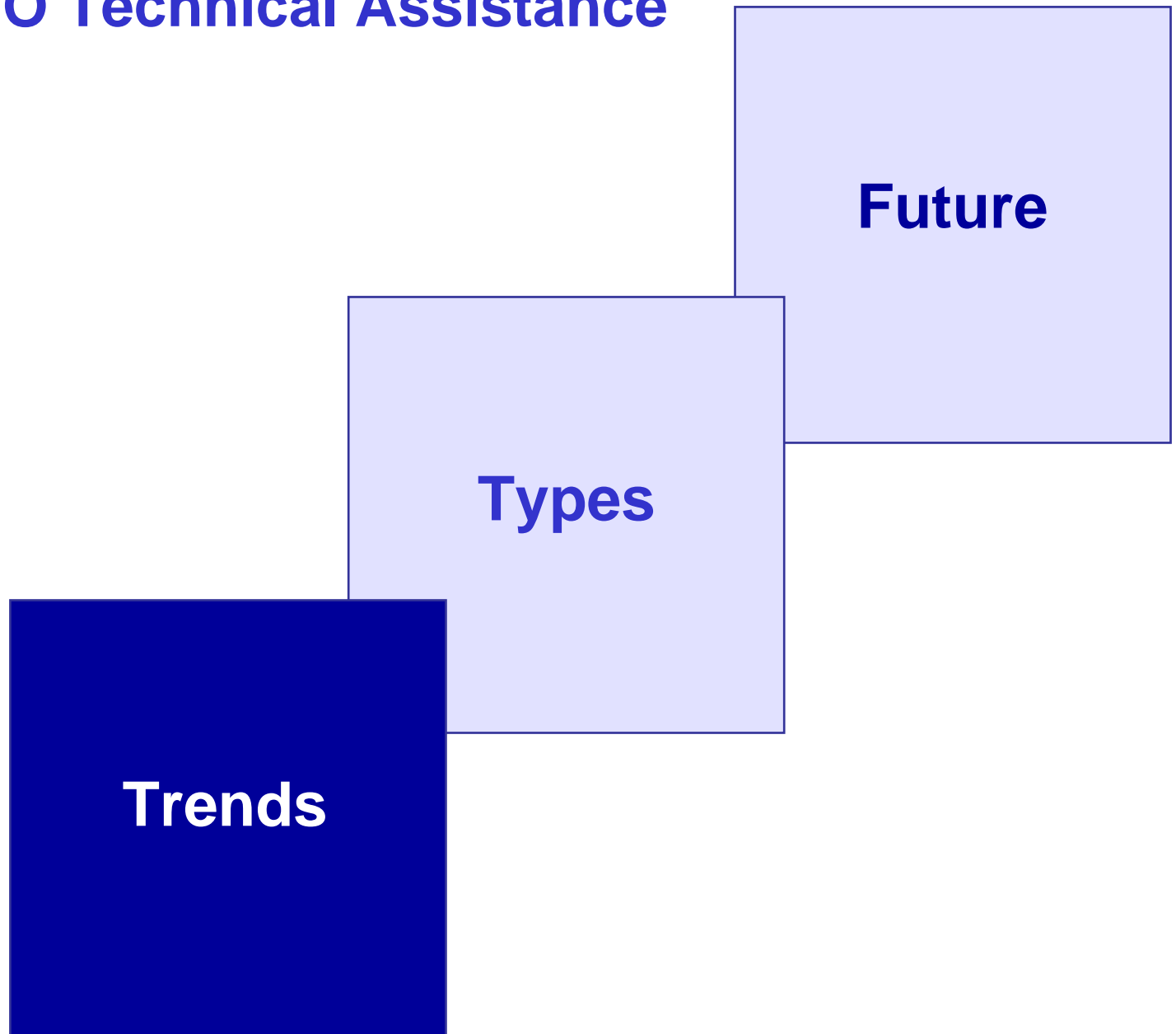
WHO work to support follow-up to the Commission on Social Determinants of Health Recommendations in the European Region

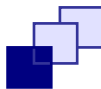
Dr Erio Ziglio

World Health Organization
Regional Office for Europe



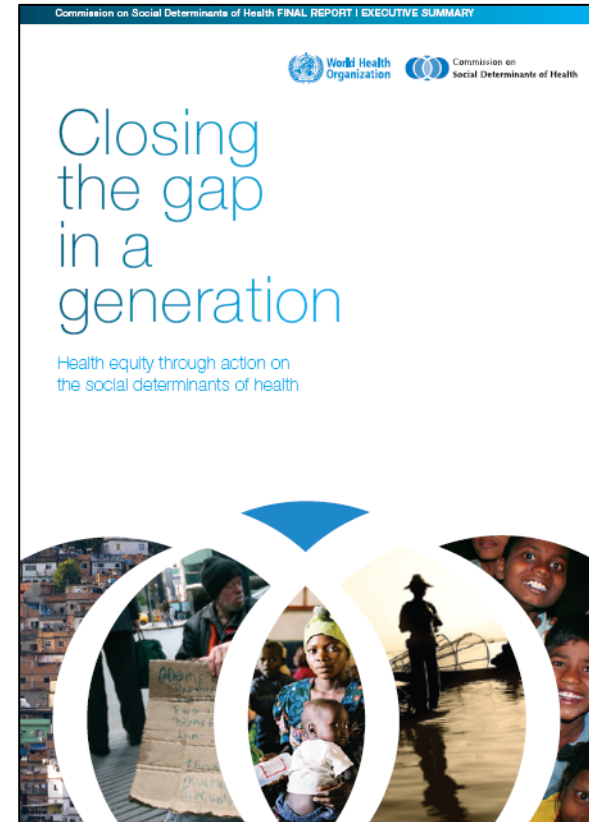
WHO Technical Assistance





Closing the Gap in a Generation

**A world where
social justice
is taken
seriously!**





WHO European Region



Member States requesting technical assistance in the area of social determinants of health/health inequities (SDH/HI)

2006-7 **6**

2008-9 **8**

2010-11 **23**





Entry points for Action

- CSDH
- WHA Resolution on addressing Health Inequities through SDH
- MDGs and Anti-Poverty Strategies
- Public Health Priorities
- National and subnational Development agendas
- EU Cohesion Policy and Structural Funds
- EU Open Method of Coordination – Social Inclusion
- EU Research Programme
- Donor policies
- Anti-crisis measures and Recovery Plans



**Responding
to Needs**

Types

Trends





Country Requests

Poor health of vulnerable people

Health gaps

Health gradients

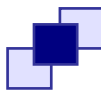




What Countries need

- Support to sustain political support to address SDH/HI
- Support to strengthen institutional capacity
- Support to develop human resources skills
- Support to overcome fragmented monitoring and build capacity for health equity analysis
- Support in policy development (including evidence in what works in different country contexts)





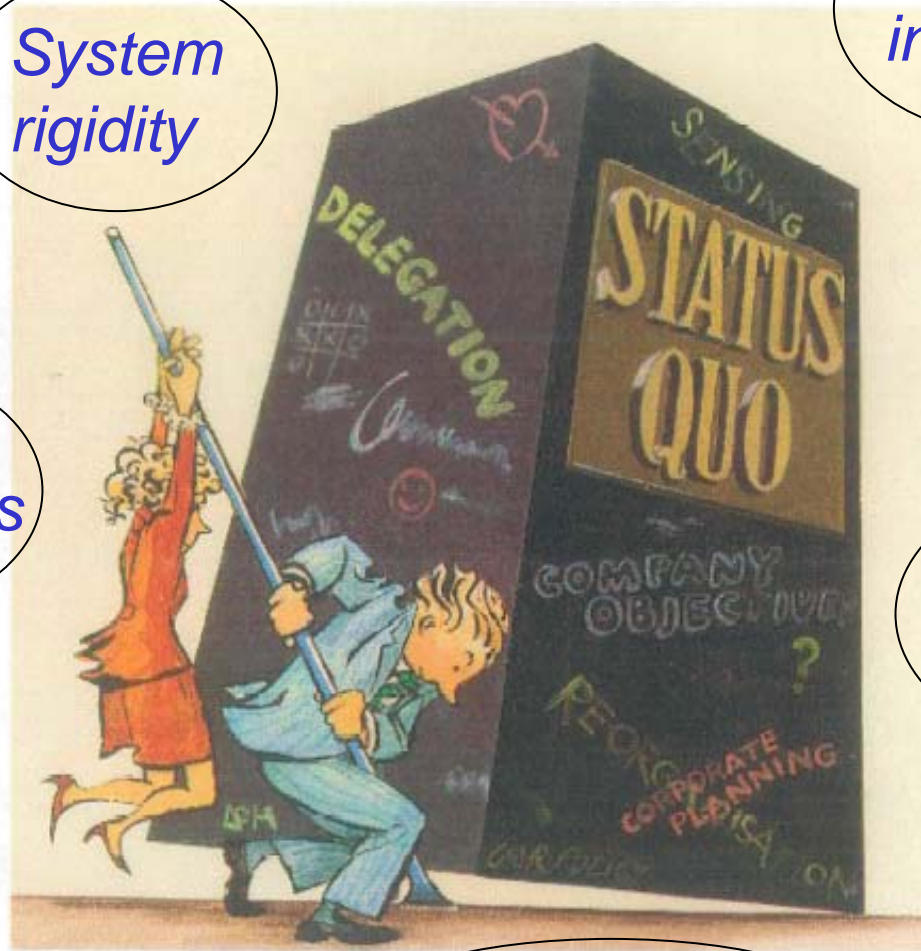
In most cases it requires strong efforts

System rigidity

Lack of incentives

Power structures

Isolated programmes



“Territorialism”

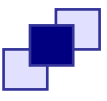




Helping Countries to mainstream action to address the SDH/HI - *The Appraisal Tool*

- Element (A): Sustained policy commitment
- Element (B): Robust and equity oriented Health System
- Element (C): Active intersectoral working
- Element (D): Sustained funding mechanism
- Element (E): A high priority for health
- Element (F): Social capital and cohesion for health
- Element (G): Public engagement and community participation
- Element (H): Accountability for SDH/HI
- Element (I): Health intelligence
- Element (L): Monitoring of system performance
- Element (M): Communication and advocacy
- Element (X): Other according to country context

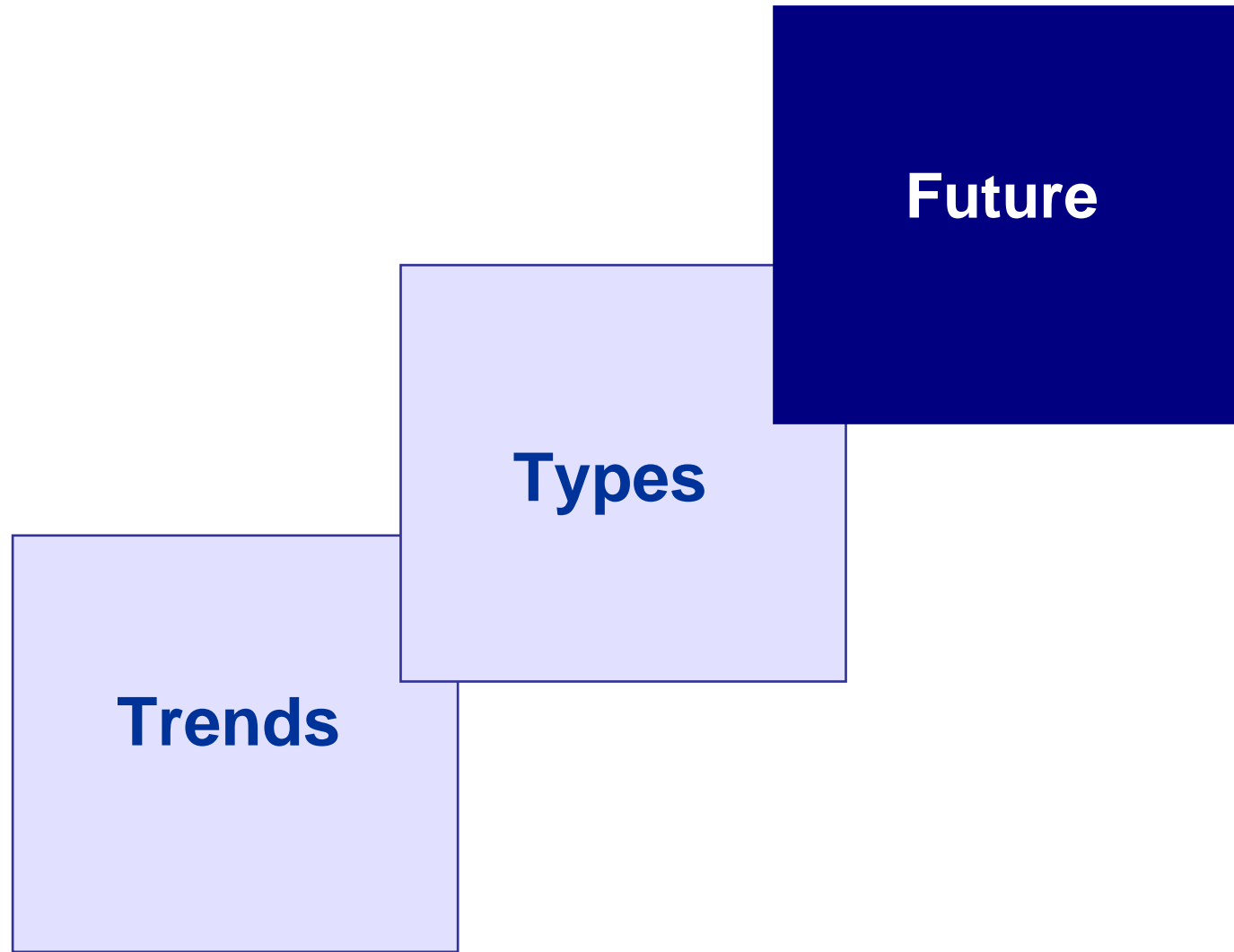




Assessing and Strengthening Capacities

	Current position as evidenced by	What should be done and by whom	Next steps to be taken in the next 12 months
Element (A)			
Element (B)			
Element (C)			





1. An enabling European platform

- To position WHO support within local, regional, national and European development
- To ensure anti-crises measures do not further increase health inequities
- To explore and sustain new collaboration and synergy within European Agencies and countries





2. Shaping a New Research Focus

- Which investments contribute to producing and maintaining the *health capital* in a community region or country in an equitable way?
- Which systems and mechanisms ensure health and development priorities and processes are better integrated?
- How can the economic crisis be tackled and recovery be fostered in a way that doesn't increase health inequities?





3. Scale up Technical Assistance to strengthen National and Subnational capacity

- Leadership
- Institutional (Intelligence and systems)
- Human resources (skills and know-how)





The Venice LAB – Investment for Health and Development By Addressing the Social Determinants of Health

